

ST. GEORGE

in Mill Creek Landing

The Cottages
in Mill Creek Landing



The St. George is a lovely 3 bedroom, 2 bath cottage-style home with an open floor plan, stainless steel GE furnished kitchen and 1 car garage. Luxurious master bathroom offers double vanities and extra large walk-in closet. The rocking chair front porch, rear patio, and finely landscaped lawn complete a uniquely southern outdoor living space to complement the modern convenience and open feel of the home.

about the area:

Mill Creek Landing is a charming community with street lighting and a newly built kayak launch for fishing or canoeing. Only 10 minutes to downtown Wilmington, 20 minutes to area beaches.

The busy downtown of Wilmington will seem miles away even though it is only a ten minute drive from the community. That is because much of what you need, you can find right in the Leland community. Championship golf courses, shopping, dining and retail are all within a five minute drive.

<http://www.thecottagesatmillcreeklanding.com>

info@southernhomebuildersinc.com

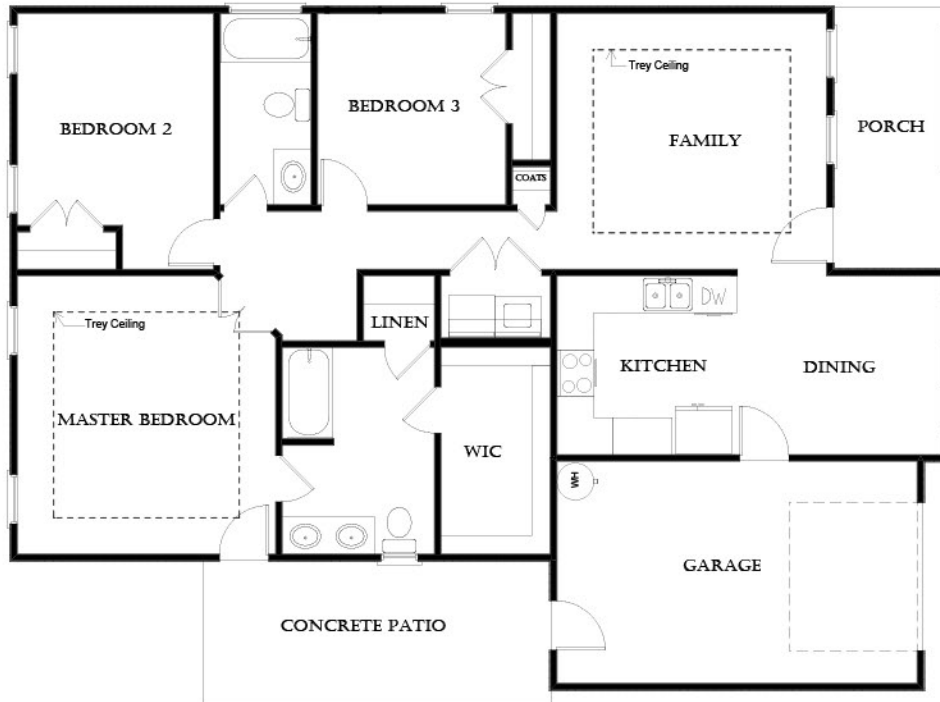
Call Today! 910-279-1016

3 Bedrooms - 2 Bathrooms

Heated Area: 1314 SQ FT - Porch: 89 SQ FT - Garage: 246 SQ FT

Exteriors Designed for Coastal Living
Trane Heating & Air Conditioning
10 year Home Warranty

Energy Efficiency Tested
Rocking Chair Front Porch
Large Master Bedroom



Plans, design, images and photographs are property of Southern Homebuilders, Inc. Only one virtual visit-to-a-home is provided. Physical square footage and dimensions are close approximations and are not represented to be exact. Contract is final and all information, proposals only, and may change at any time.