

THE WILLOW

in The Neighborhoods of Avendale

AVENDALE

about the home:

The Willow is a 2 story, 4 bedroom, 2.5 bathroom home with a 2 car garage. Upstairs master bedroom includes luxury bath, garden tub, stand alone shower and double vanities. All four spacious bedrooms feature walk-in closets. Downstairs offers large family room, an open kitchen/breakfast area, and a flex room. Optional screened-in porch and gas fireplace available.

about the area:

The Neighborhoods of Avendale is one of the Hampstead Area's newest upscale communities. The Hampstead, North Carolina community offers a convenient, family oriented life style for those who seek the best of Wilmington city life and Pender County's relaxed way of life. The community's homes are situated on lovely homesites complete with sewer, water, curb and gutter.

The Neighborhoods of Avendale is located in the award winning Topsail School District of Hampstead, NC. The community is convenient to the city and coastal amenities of Wilmington, Hampstead, Jacksonville, and Topsail Beach!

<http://www.neighborhoodsofavondale.com>

info@southernhomebuildersinc.com

Call Today! 910-270-8500



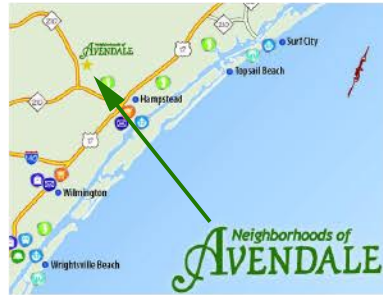
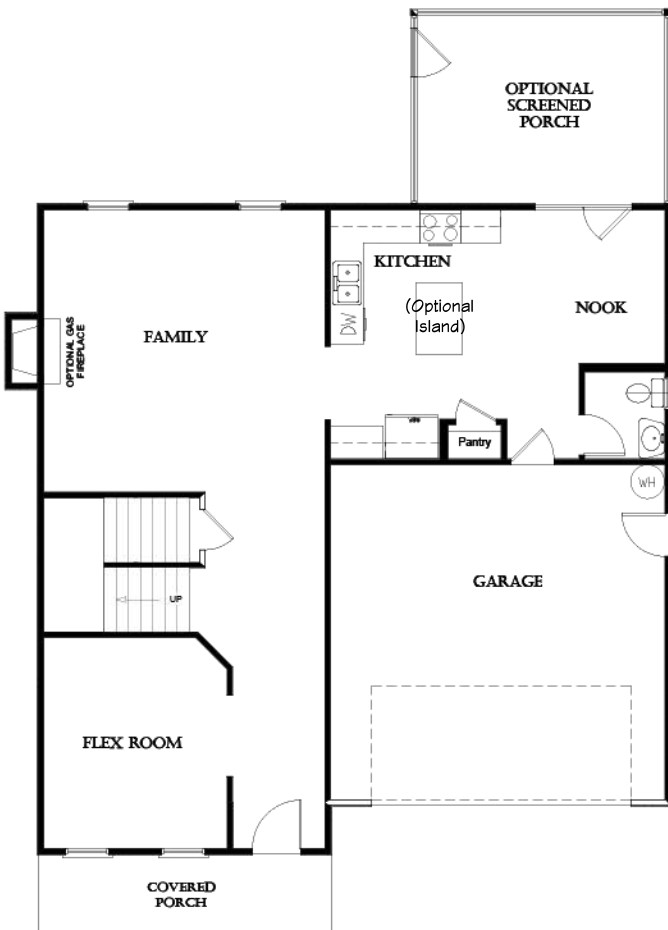
4 Bedrooms - 2.5 Bathrooms

Heated Area: 2463 SQ FT - Porch: 90 SQ FT

Screened Porch: 192 SQ FT Garage: 445 SQ FT

Exteriors Designed for Coastal Living
Trane Heating & Air Conditioning
10 year Home Warranty

Energy Efficiency Tested
Optional Screened-In Porch
Downstairs Flex Room / Study



Plans, design, images and photographs are property of Southern Homebuilders, Inc. They are without warranty unless stated. Planned square footage and dimensions are for informational purposes only and may change at any time. Contact is required for informational purposes only.