

# THE HAMPTON C

*in The Neighborhoods of Avendale*

AVENDALE



*about the home:*

The Hampton is a 2 story, 4 bedroom, 2.5 bathroom home with a 2 car garage. Upstairs master bedroom features a tray ceiling, luxury bath, garden tub, stand alone shower, and 2 large walk-in closets. 2nd bedroom is as large as the master with large walk-in closet. Downstairs offers formal dining with Hardwood floors, a large family room and an open kitchen/breakfast area. Lawns are fully sodded.

*about the area:*

The Neighborhoods of Avendale is one of the Hampstead Area's newest upscale communities. The Hampstead, North Carolina community offers a convenient, family oriented life style for those who seek the best of Wilmington city life and Pender County's relaxed way of life. The community's homes are situated on lovely homesites complete with sewer, water, curb and gutter.

The Neighborhoods of Avendale is located in the award winning Topsail School District of Hampstead, NC. The community is convenient to the city and coastal amenities of Wilmington, Hampstead, Jacksonville, and Topsail Beach!

<http://www.neighborhoodsofavondale.com>

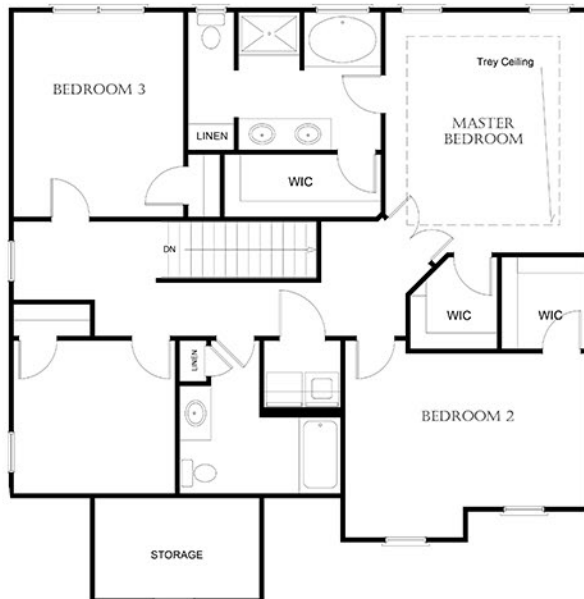
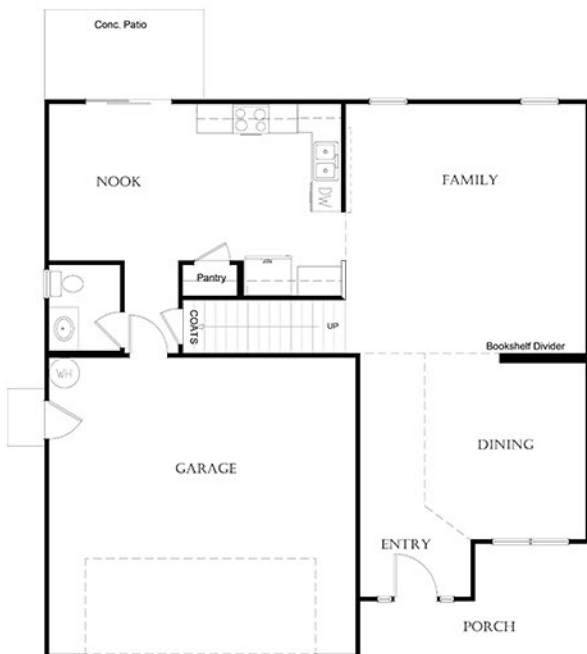
[info@southernhomebuildersinc.com](mailto:info@southernhomebuildersinc.com)

4 Bedrooms - 2.5 Bathrooms  
 Heated Area: 2124 SQ FT - Porch: 96 SQ FT - Garage: 462 SQ FT

Exteriors Designed for Coastal Living  
 Trane Heating & Air Conditioning  
 10 year Home Warranty

Energy Efficiency Tested  
 Luxurious Master Bathroom  
 Built-in Bookshelves

Call Today! 910-270-8500



Plans, design, images and photographs are property of Southern Homebuilders, Inc. Only use without written consent is prohibited. Provisions are made for optional features and accessories are extra. Dimensions are close approximations and are not guaranteed to be exact. Content is furnished for informational purposes only and may change at any time.