

# THE CAROLINE

*in The Neighborhoods of Avendale*

AVENDALE

about the home:

The Caroline is a lovely 3 bedroom, 2 bathroom home with a 2 car garage. Master bedroom feature a luxury bath, garden tub, stand alone shower, double vanities and a large walk-in closet. Dining room opens to a large family room and an open kitchen/breakfast area. The finely landscaped yards are fully sodded and irrigated.

about the area:

The Neighborhoods of Avendale is one of the Hampstead Area's newest upscale communities. The Hampstead, North Carolina community offers a convenient, family oriented life style for those who seek the best of Wilmington city life and Pender County's relaxed way of life. The community's homes are situated on lovely homesites complete with sewer, water, curb and gutter.

The Neighborhoods of Avendale is located in the award winning Topsail School District of Hampstead, NC. The community is convenient to the city and coastal amenities of Wilmington, Hampstead, Jacksonville, and Topsail Beach!

<http://www.neighborhoodsofavondale.com>

[info@southernhomebuildersinc.com](mailto:info@southernhomebuildersinc.com)

Call Today! 910-270-8500

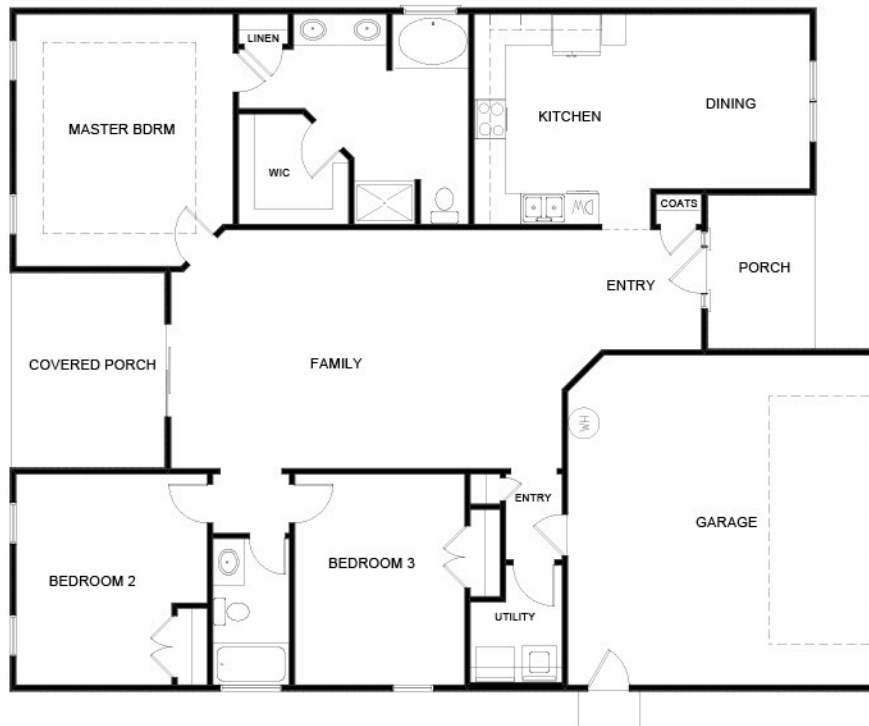


3 Bedrooms - 2 Bathrooms

Heated Area: 1736 SQ FT - Porch: 197 SQ FT - Garage: 440 SQ FT

Exteriors Designed for Coastal Living  
Trane Heating & Air Conditioning  
10 year Home Warranty

Energy Efficiency Tested  
Luxurious Master Bathroom  
Covered Rear Porch



Plans, design, images and measurements are property of Southern Homebuilders, Inc.  
Only used without written consent is identical. Provisions and are not represented to be exact.  
Contract is required for informational purposes only and may change at any time.