

THE CARLYLE

in The Neighborhoods of Avendale

AVENDALE

about the home:

Carlyle is a 2 story, 4 bedroom, 2.5 bathroom home with a 2 car garage. Upstairs master bedroom with luxury bath, garden tub, stand alone shower, double vanities and 2 large walk-in closets. Downstairs offers formal dining room, a large family room, and an open kitchen/breakfast area. The finely landscaped yards are fully sodded.

about the area:

The Neighborhoods of Avendale is one of the Hampstead Area's newest upscale communities. The Hampstead, North Carolina community offers a convenient, family oriented life style for those who seek the best of Wilmington city life and Pender County's relaxed way of life. The community's homes are situated on lovely homesites complete with sewer, water, curb and gutter.

The Neighborhoods of Avendale is located in the award winning Topsail School District of Hampstead, NC. The community is convenient to the city and coastal amenities of Wilmington, Hampstead, Jacksonville, and Topsail Beach!

<http://www.neighborhoodsofavondale.com>

info@southernhomebuildersinc.com

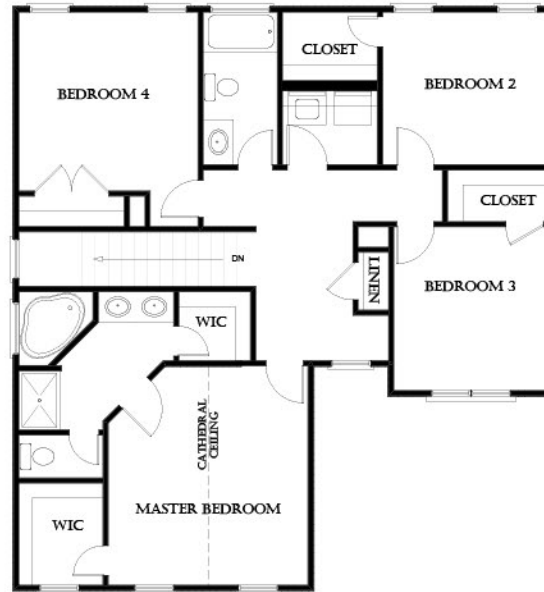
Call Today! 910-270-8500

4 Bedrooms - 2.5 Bathrooms

Heated Area: 1898 SQ FT - Porch: 90 SQ FT - Garage: 400 SQ FT

Exteriors Designed for Coastal Living
Trane Heating & Air Conditioning
10 year Home Warranty

Energy Efficiency Tested
Luxurious Master Bathroom
Stainless Steel GE Appliances



Plans, photos and programs are property of Southern Homebuilders, Inc. Only use without written consent is permitted. Dimensions, square footage and other information are for informational purposes only, and may change at any time.